

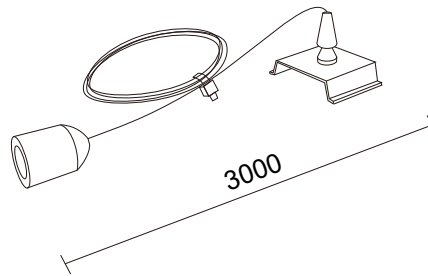


Description

The wire suspension for 1-phase track systems comes in white and black: the white option ensures clean, seamless mounting to enhance modern interior aesthetics, while the black option combines functionality with a sleek design for secure, stylish mounting solutions.

Article number: V115001N0W, V115001N0B.

Technical drawing

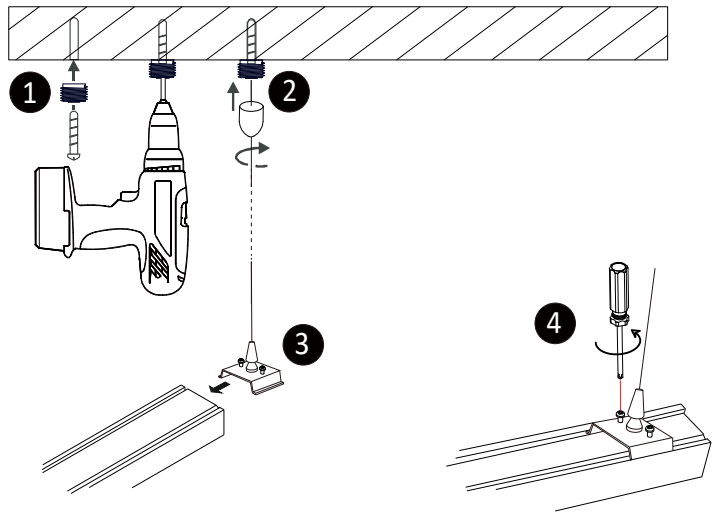


1 Phase Support P

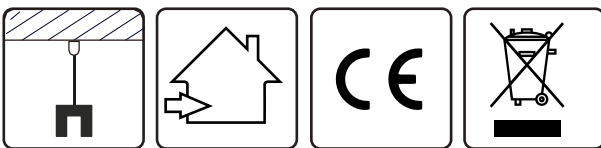
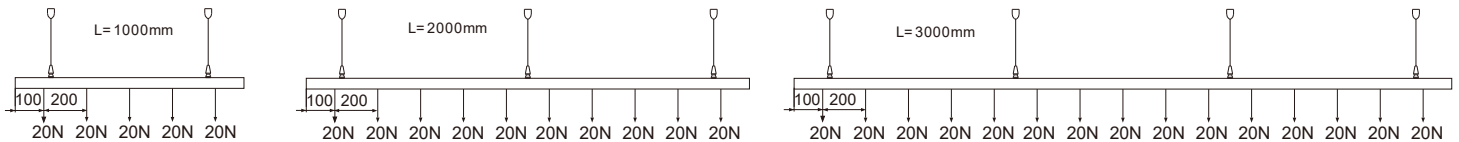
| | |
|-----------------------|---------|
| Cable length | 3000 mm |
| Material | Steel |
| Maximum load capacity | 100N |
| Weight(kg) | 0.04 |

| Color | Art.No |
|-------|------------|
| ○ | V115001N0W |
| ● | V115001N0B |

Installation digram



Fixing point diagram



Disclaimer
All technical data as well as weight and dimension specifications are based on standard values and have been carefully prepared. We reserve the right to make technical changes at any time to reflect progress. Product images are for illustrative purposes and may differ from the original. Errors excepted.
As of: 23/06/2025. Orders are subject to our General Terms and Conditions of Sale, available at <https://www.vysnlighting.com/de/pages/agb>