

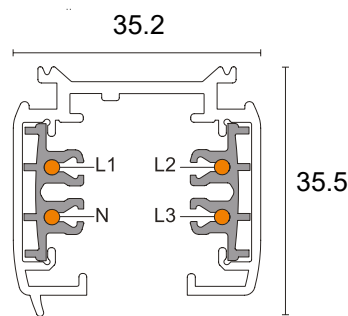


## Description

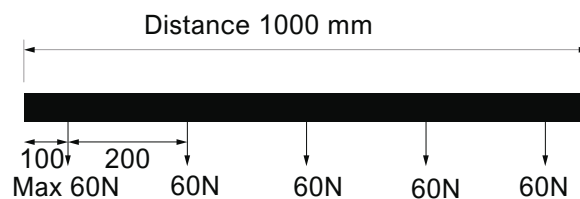
The 1-meter 3-phase track comes in white and black, combining clean aesthetics with dependable performance to create seamless lighting systems. The white version is ideal for such setups, while the black one offers a sleek, modern option for secure and professional lighting installations.

Protection class: I, Protection rating: IP20, Voltage: 220-250VAC.  
Article number: PRO-0410-W, PRO-0410-B.

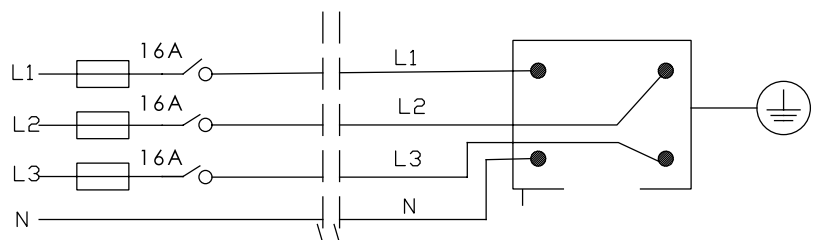
## Technical drawing



## Mechanical load diagram

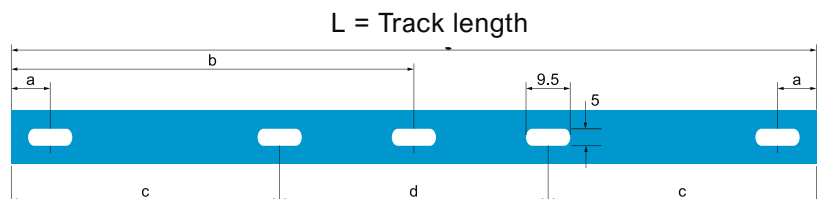


## Connecting diagram

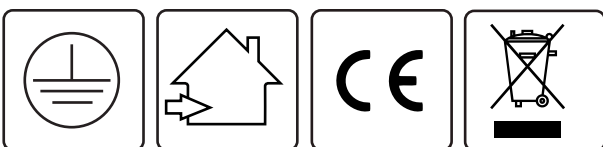


## Fixing point dimensions

L / mm	a / mm	b / mm	c / mm	d / mm
1000	125			
2000	125	998		
3000	125		914	1167



It is recommended to fasten the track at every hole with a screw or suspension kit.



## Accessories

Feedin Left	
Color	Art.No
○	PRO-0431L-W
●	PRO-0431L-B



Feedin Right	
Color	Art.No
○	PRO-0431R-W
●	PRO-0431R-B



T Connector Left 1	
Color	Art.No
○	PRO-0436L1-W
●	PRO-0436L1-B



T Connector Left 2	
Color	Art.No
○	PRO-0436L2-W
●	PRO-0436L2-B



T Connector Right 1	
Color	Art.No
○	PRO-0436R1-W
●	PRO-0436R1-B



T Connector Right 2	
Color	Art.No
○	PRO-0436R2-W
●	PRO-0436R2-B



Middle Connector	
Color	Art.No
○	PRO-0434-W
●	PRO-0434-B



Electrical Connector	
Color	Art.No
○	PRO-0433-W
●	PRO-0433-B



Flexible Connector	
Color	Art.No
○	PRO-0439-W
●	PRO-0439-B



Adapter	
10A, 220-250V, 50/60Hz, 100N	
Color	Art.No
○	PRO-0440-W
●	PRO-0440-B



Endcap	
Color	Art.No
○	PRO-0432-W
●	PRO-0432-B



See more details on [vysnlighting.com](https://www.vysnlighting.com)

### Disclaimer

All technical data as well as weight and dimension specifications are based on standard values and have been carefully prepared. We reserve the right to make technical changes at any time to reflect progress. Product images are for illustrative purposes and may differ from the original. Errors excepted.

As of: 11/06/2025. Orders are subject to our General Terms and Conditions of Sale, available at

<https://www.vysnlighting.com/de/pages/agb>